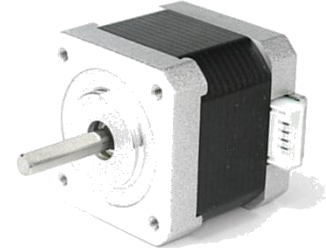


1.8° 42mm High Torque Hybrid Stepper Motor

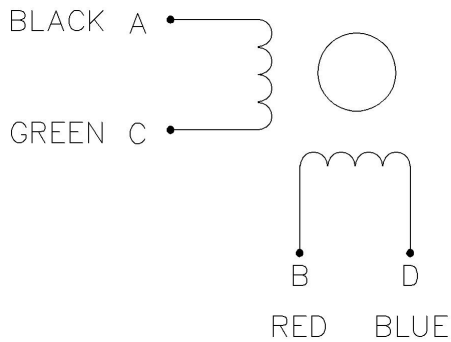
Item	Specifications
Step Angle	1.8°
Step Angle Accuracy	±5%(full step,no load)
Resistance Accuracy	±10%
Inductance Accuracy	±20%
Temperature Rise	80°Cmax
Ambient Temperature	-20°C~+50°C
Insulation Resistance	100 MΩ Min. ,500VDC
Dielectric Strength	500VAC for 1minute
Shaft Radial Play	0.02Max. (450g-load)
Shaft Axial Play	0.08Max. (450g-load)
Max. radial force	28N (20mm from the flange)
Max. axial force	10N



42mm Hybrid Stepper Motor Specifications:

Model No.	Rated Voltage	Current /Phase	Resistance /Phase	Inductance /Phase	Holding Torque	# of Leads	Detent Torque	Rotor Inertia	Motor Length	Weight
	V	A	Ω	mH	kg.cm	No.	g.cm	g.cm ²	(L)mm	kg
JK42HS40-1004AC	3.9	1	3.9	8.9	4.0	4	150	54	40	0.28

Wiring Diagram:



Pull out Torque Curve:

